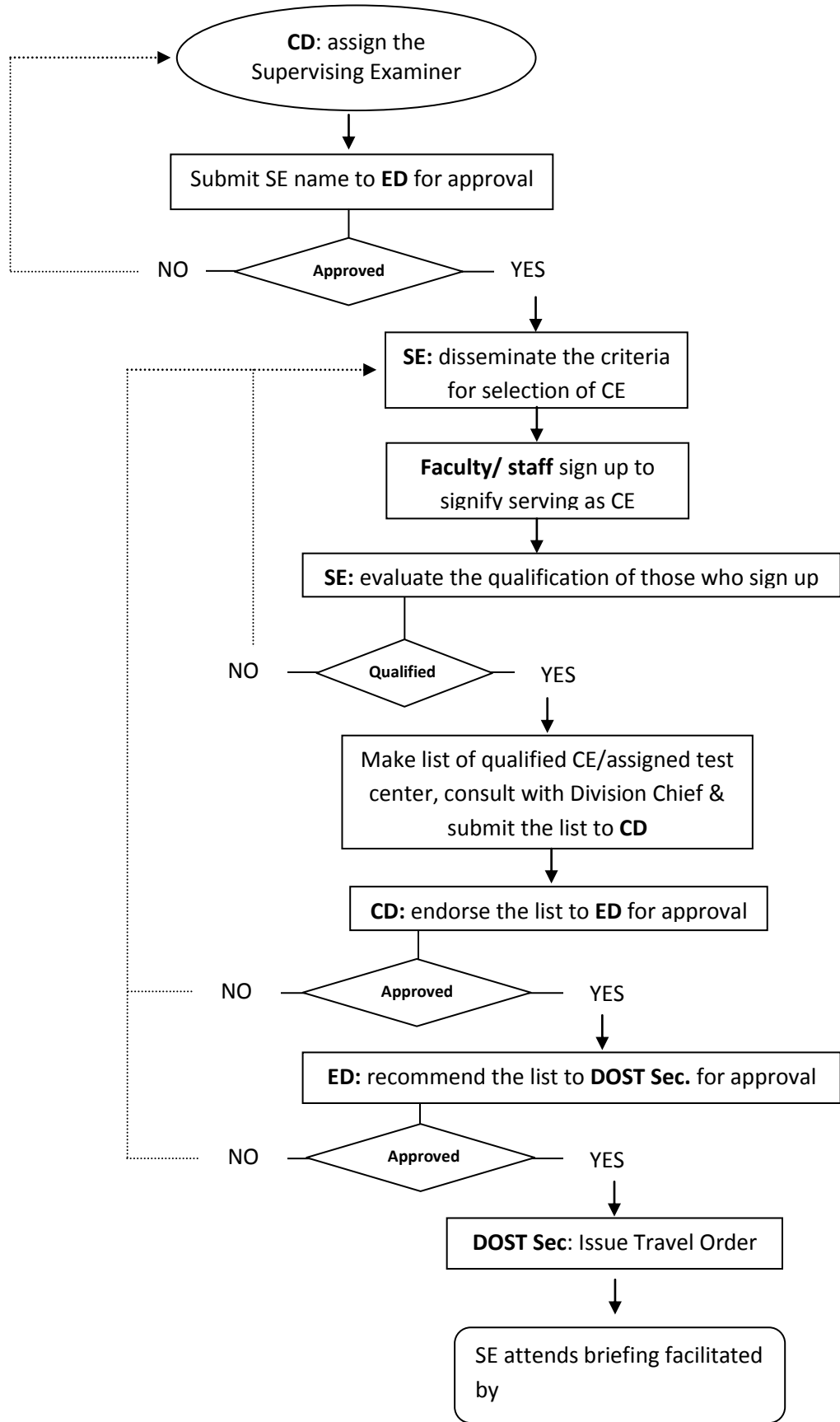


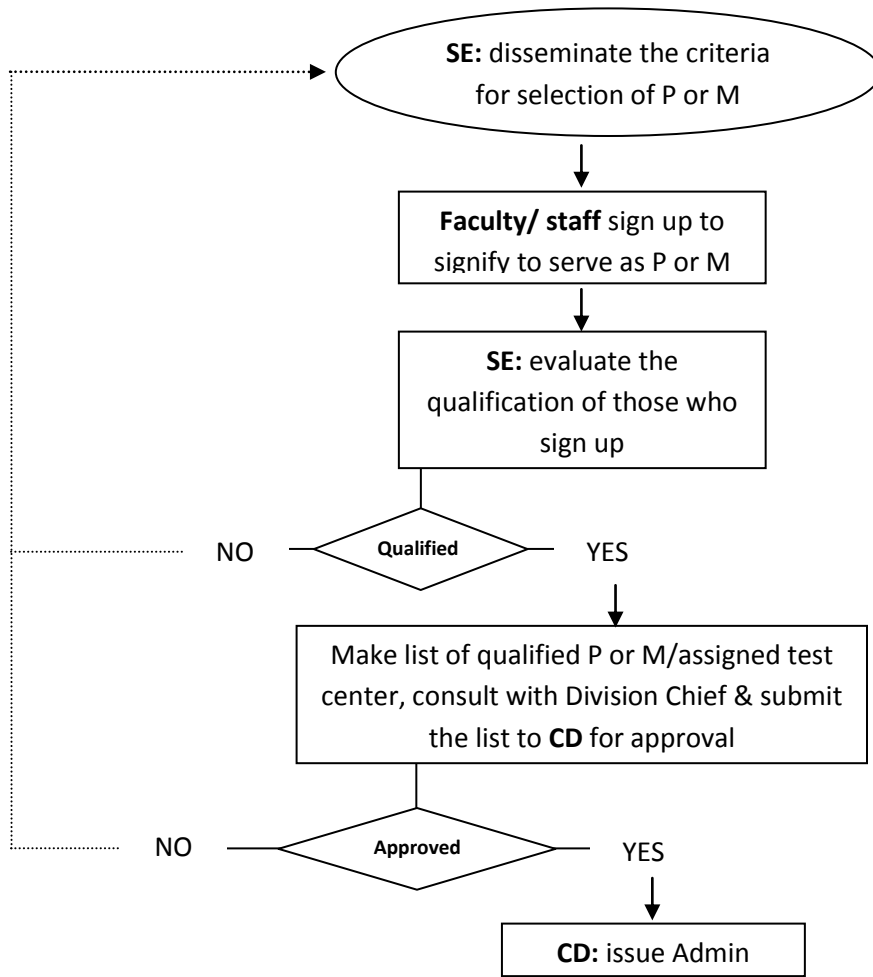
**FLOWCHART: Selection Process of Supervising Examiner for NCE**



**Legend :** SE- supervising examiner      CE- chief examiner  
 CD- campus director                      ED- executive director  
 P- proctor                                      M- Marshal

**Reference:** Revised Guidelines in the Conduct of PSHSS NCE November 27, 2013, Mabuhay Manor Hotel, Pasay City TWG for the NCE

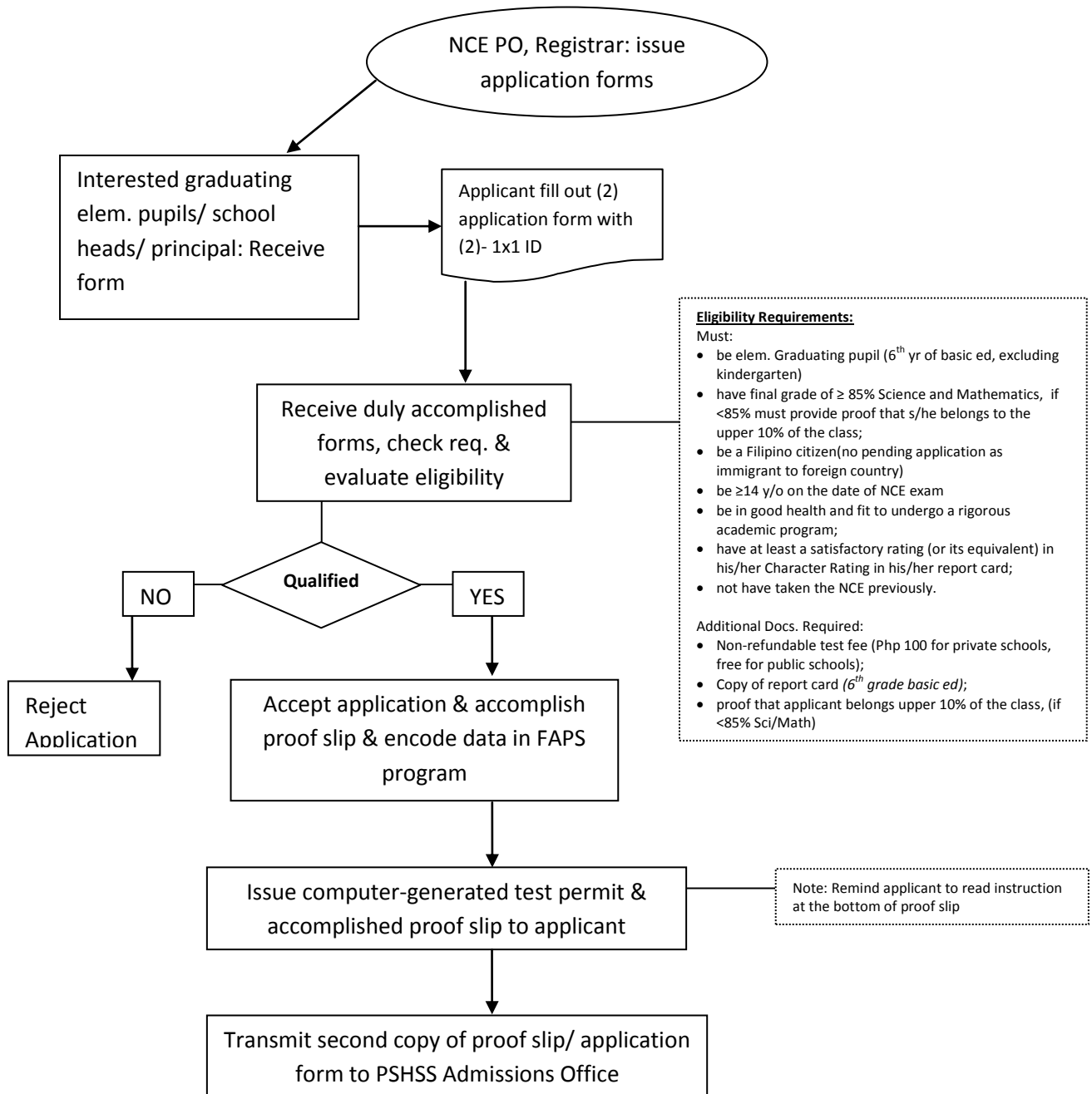
**FLOWCHART: Selection Process of Proctor & Marshal for NCE**



**Legend :** SE- supervising examiner      CE- chief examiner  
CD- campus director                      ED- executive director  
P- proctor                                      M- Marshal

**Reference:** *Revised Guidelines in the Conduct of PSHSS NCE November 27, 2013, Mabuhay Manor Hotel, Pasay City TWG for the NCE*

**FLOWCHART: NCE Applications Processing if through NCE Processing Officer/  
Campus Registrar**

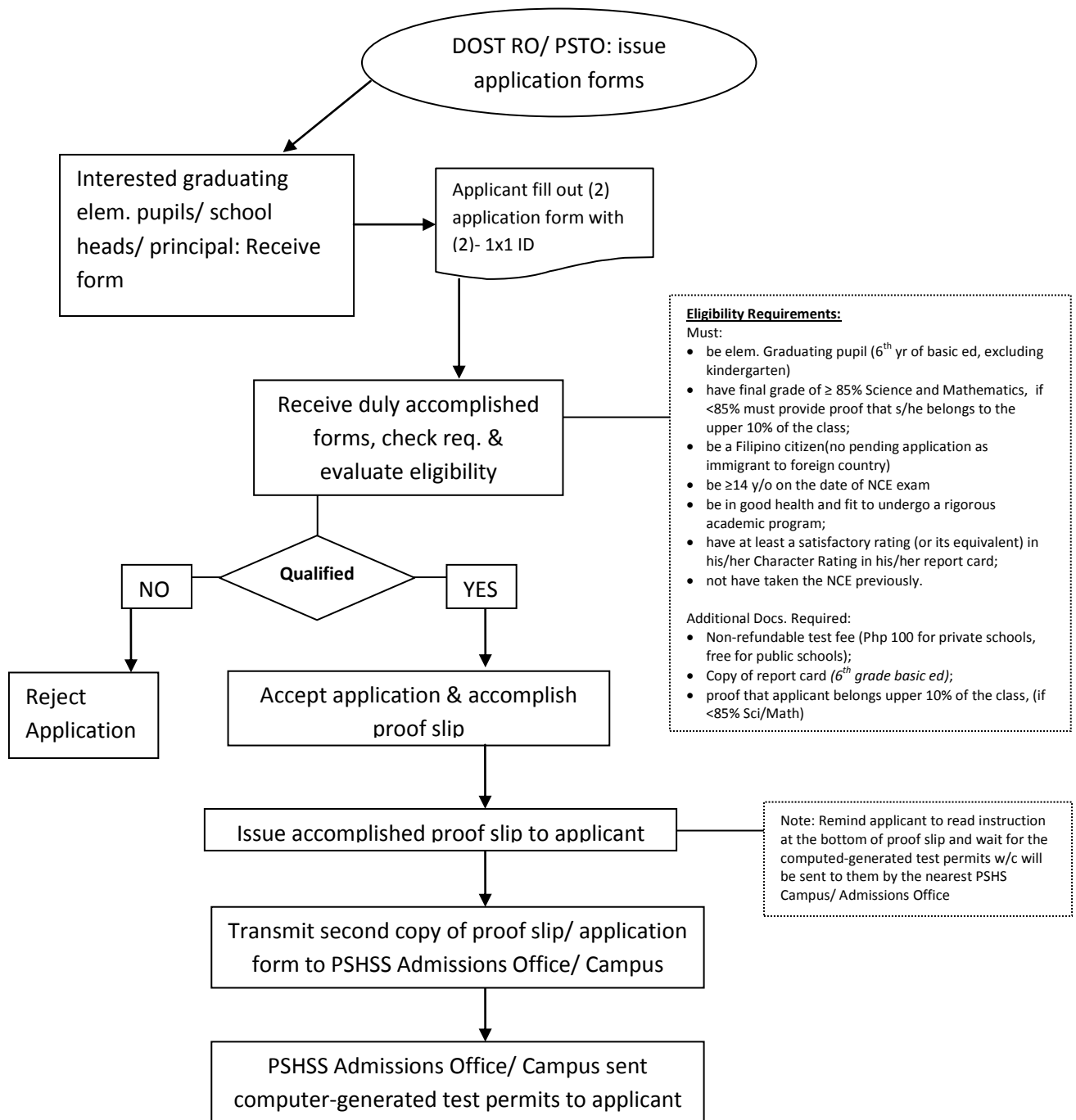


**Legend :** PO- processing officer

**Reference:** Guide for the Distribution and Processing of Application Forms; PSHSS Admissions Committee, 2009

**NOTE: Receive NCE application forms on or before the due date**

**FLOWCHART: NCE Application Processing if through DOST Regional Office or Provincial S&T Office – NCE Coordinator**



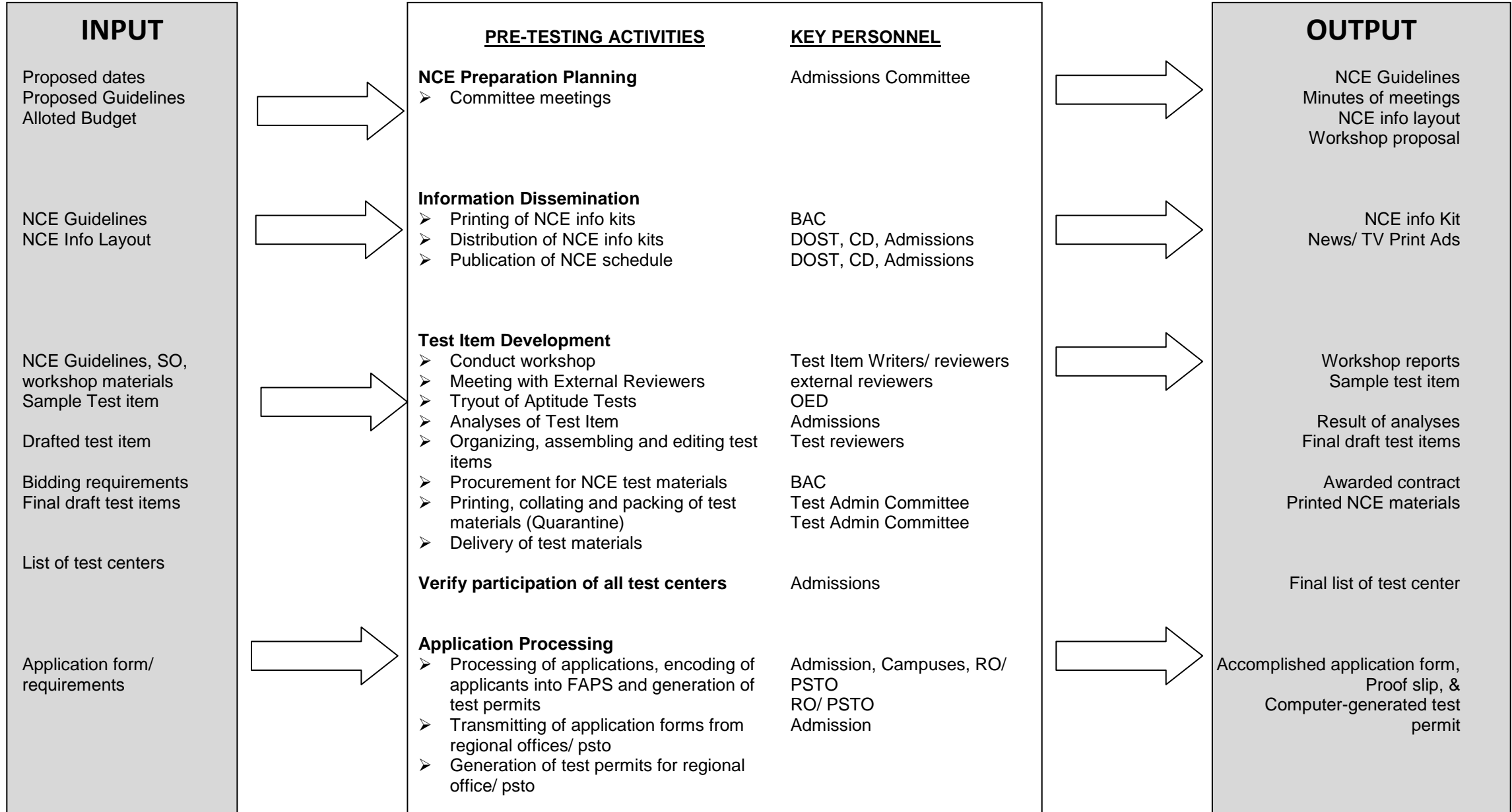
**Legend :** RO- Regional Office

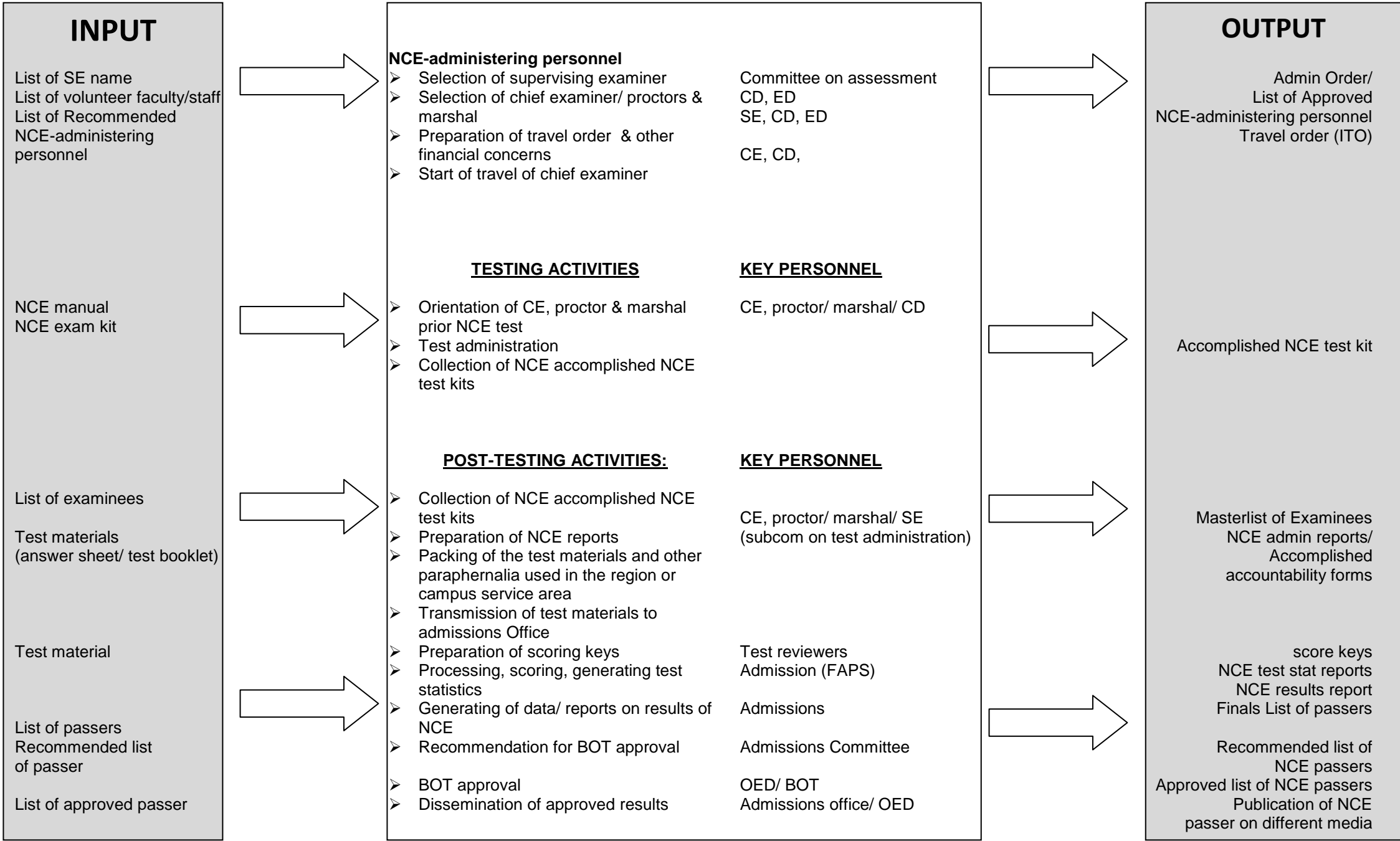
PSTO- Provincial S&T Office

**Reference:** Guide for the Distribution and Processing of Application Forms; PSHS Admissions Committee, 2009

**NOTE: Transmit application forms on or before the due date**

# NCE PROCESS





# QMS MODEL: NCE PROCESS

